

Novice 2A



Equestrian Australia Dressage Test © 2019

Diagrams © 2019 courtesy of
Nick Stanford of the

The Dressage Directory

Email : info@dressage.net.au

Diagrams are an indication only
and should always be used in conjunction
with the official Equestrian Australia test
sheets which take precedence

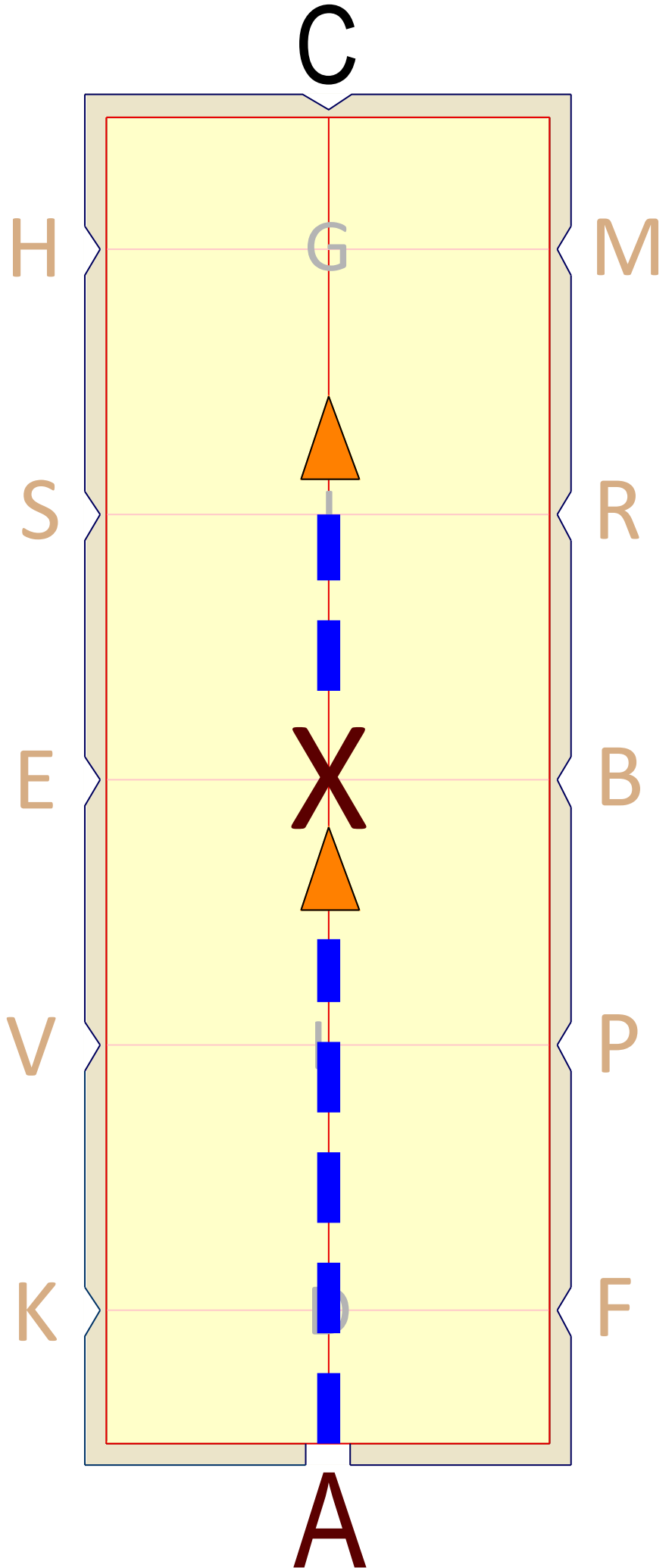
Reproduced with permission of USDF © 2019 United States Dressage Federation (USDF) (4051 Iron Works Parkway, Lexington, KY, 40511) and United States Equestrian Federation (USEF). As adapted ©2019 Equestrian Australia (EA). Diagrams © 2019 The Dressage Directory. All rights reserved. Reproduction without permission is prohibited by law. The Dressage Directory, EA, USDF and USEF are not responsible for any errors or omissions in the publication or for the use of its copyrighted material in an unauthorised manner

1

A
Enter in
working
trot

X
Halt,
Salute

Proceed
working
trot

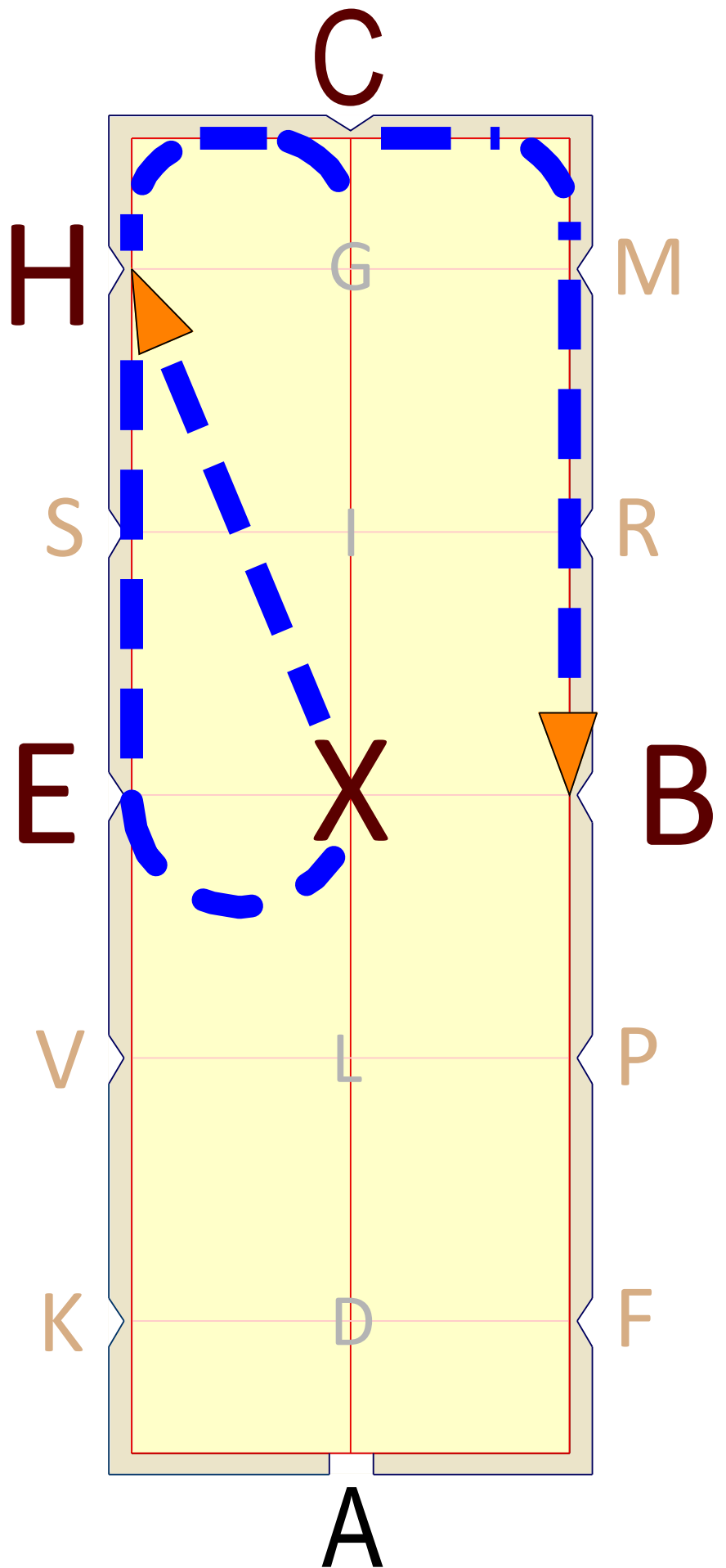


2

C
Track left

EX
Half circle
left 10m,
returning
to the track
at H

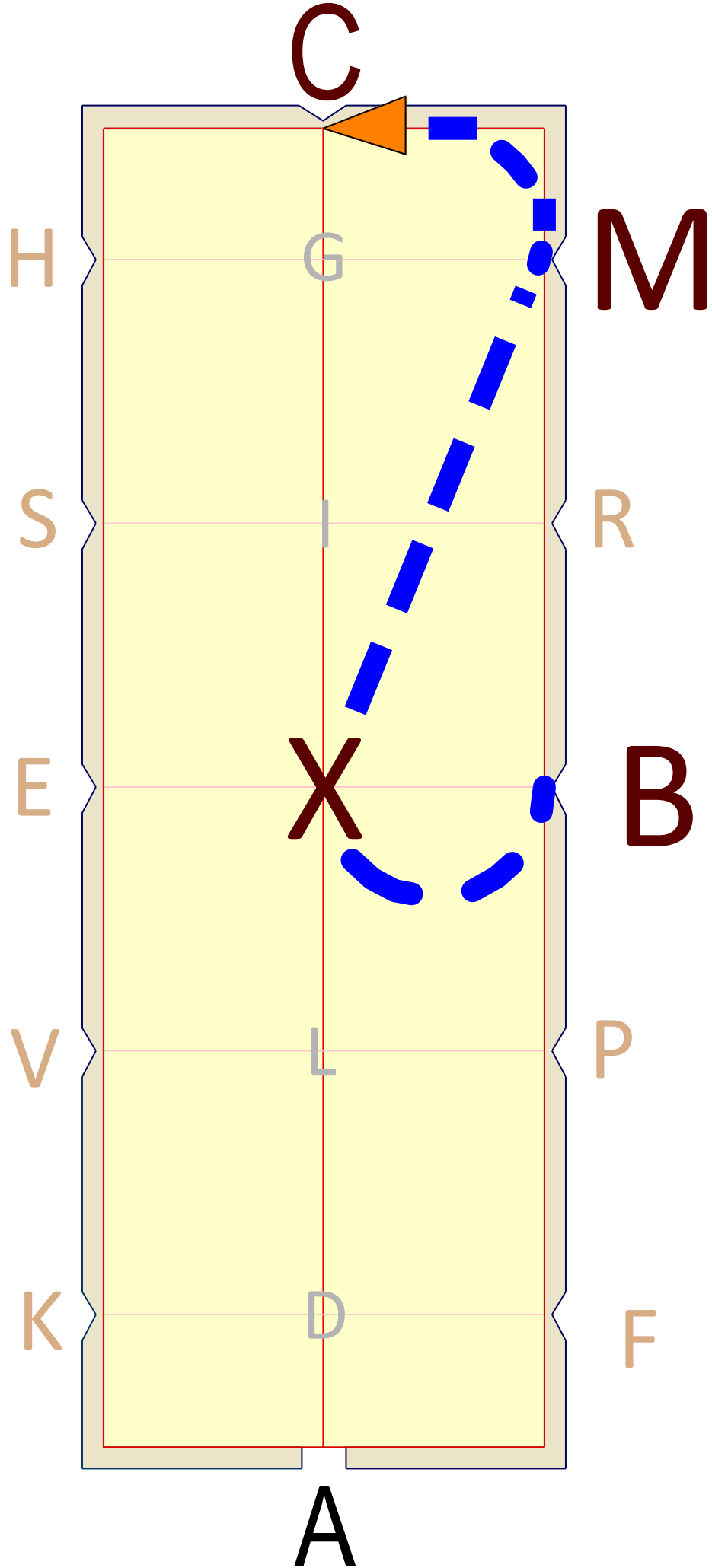
HB
working trot



3

BX
Half
circle
right 10m,
returning
to track
at M

MC
working
trot



4

C

Circle left 20m
rising trot,
allowing the
horse to stretch
forward and
downward while
maintaining contact

Before C

Shorten the reins

CH

Working trot

H

S

E

V

K

C

G

X

L

D

A

M

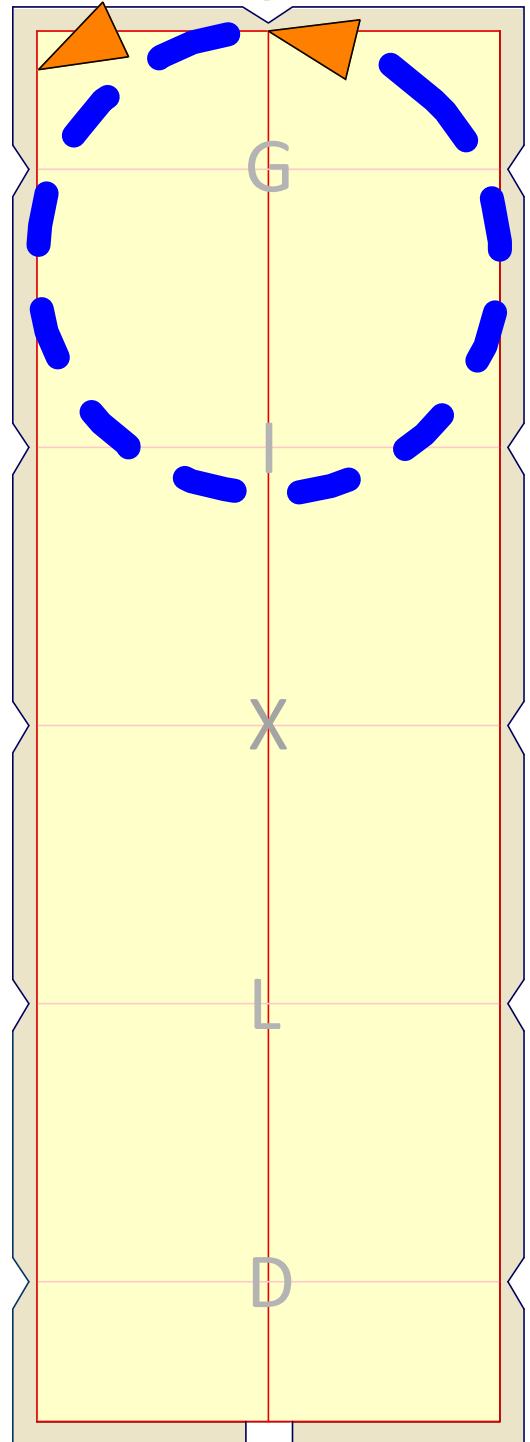
R

B

P

F

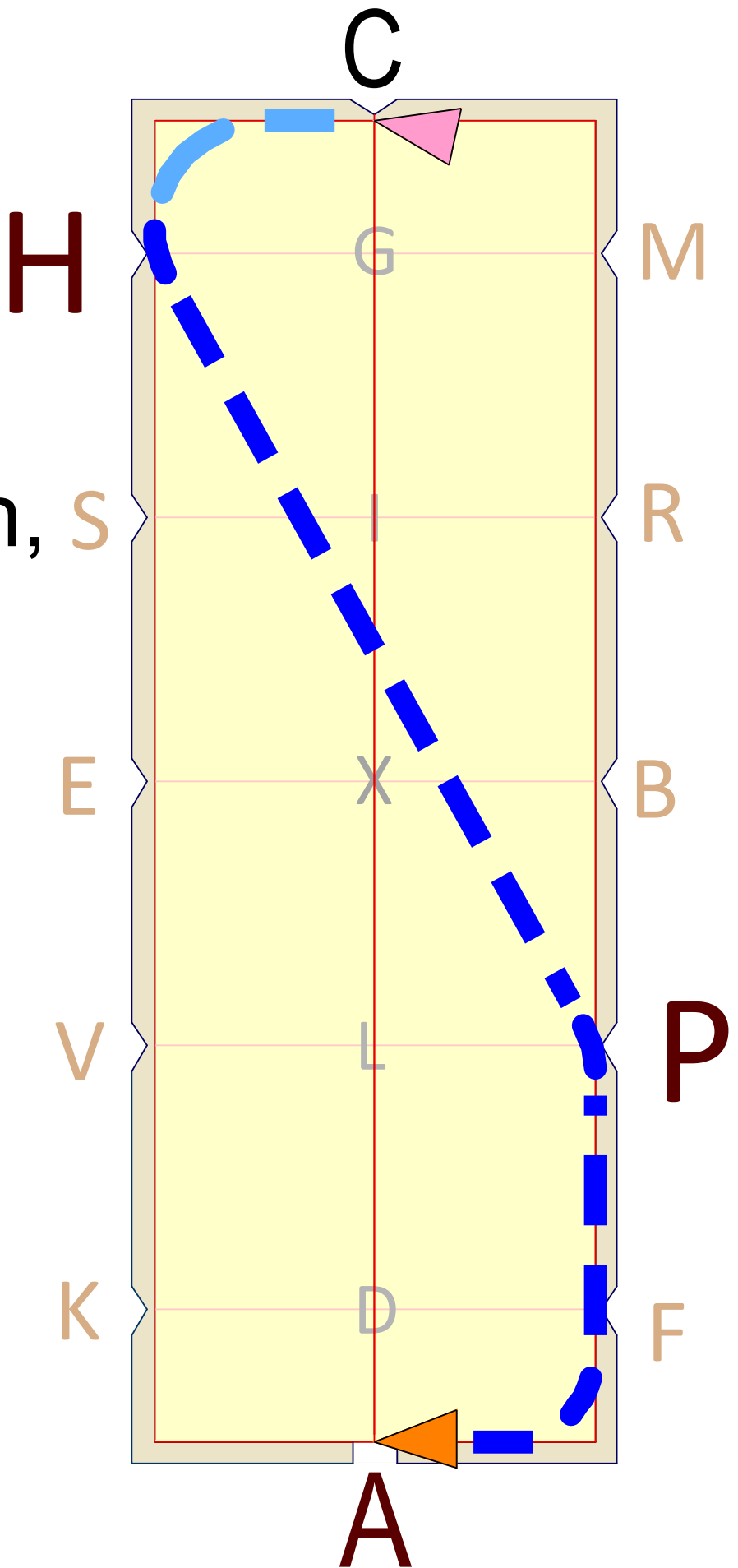
x2



5

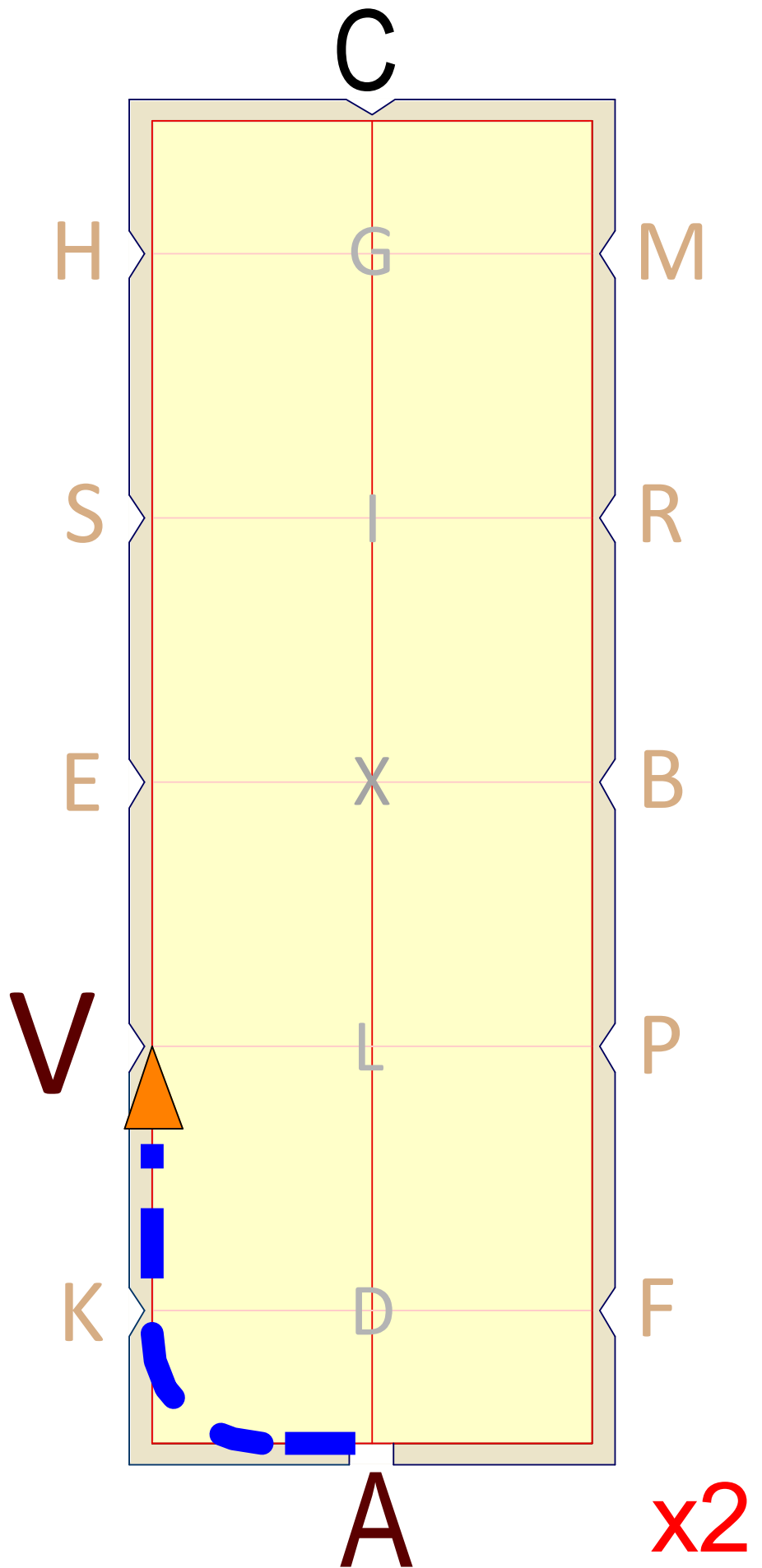
HP
Change rein,
lengthen
stride in
trot

PA
Working
trot



6

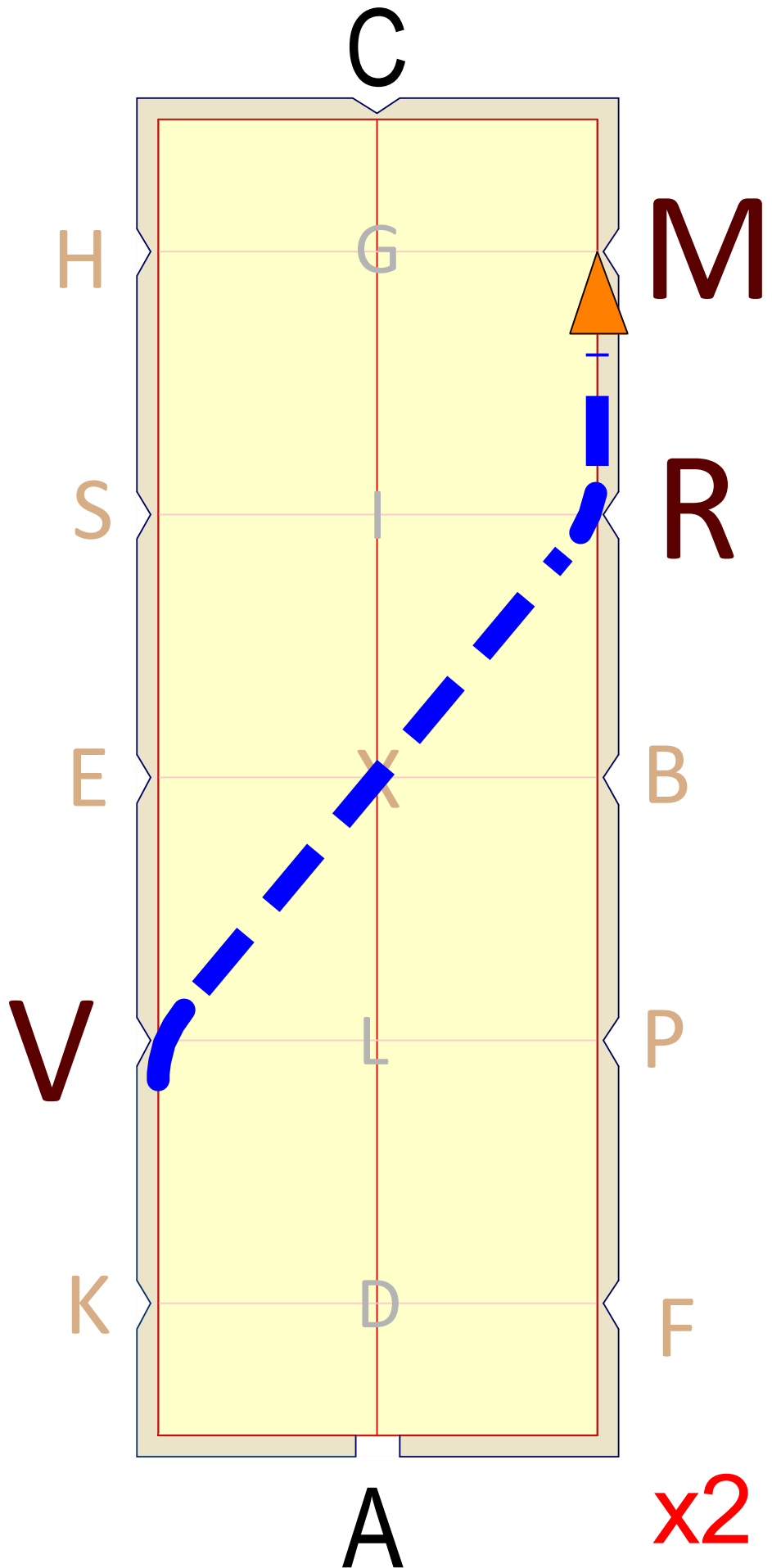
AV Medium Walk



7

VR
Change
rein,
free walk
on a
long rein

RM
Medium
walk

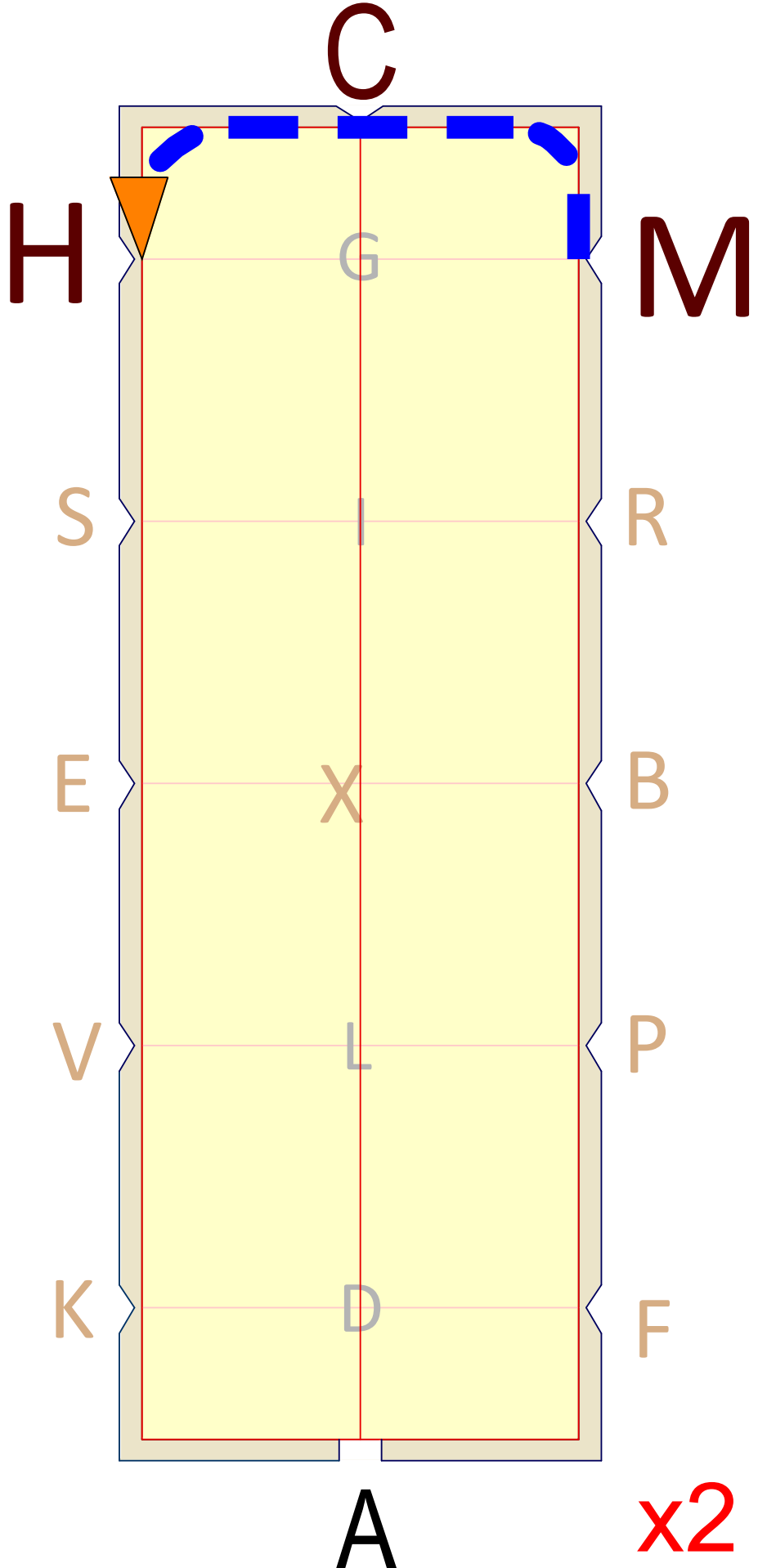


8

M
Working
trot

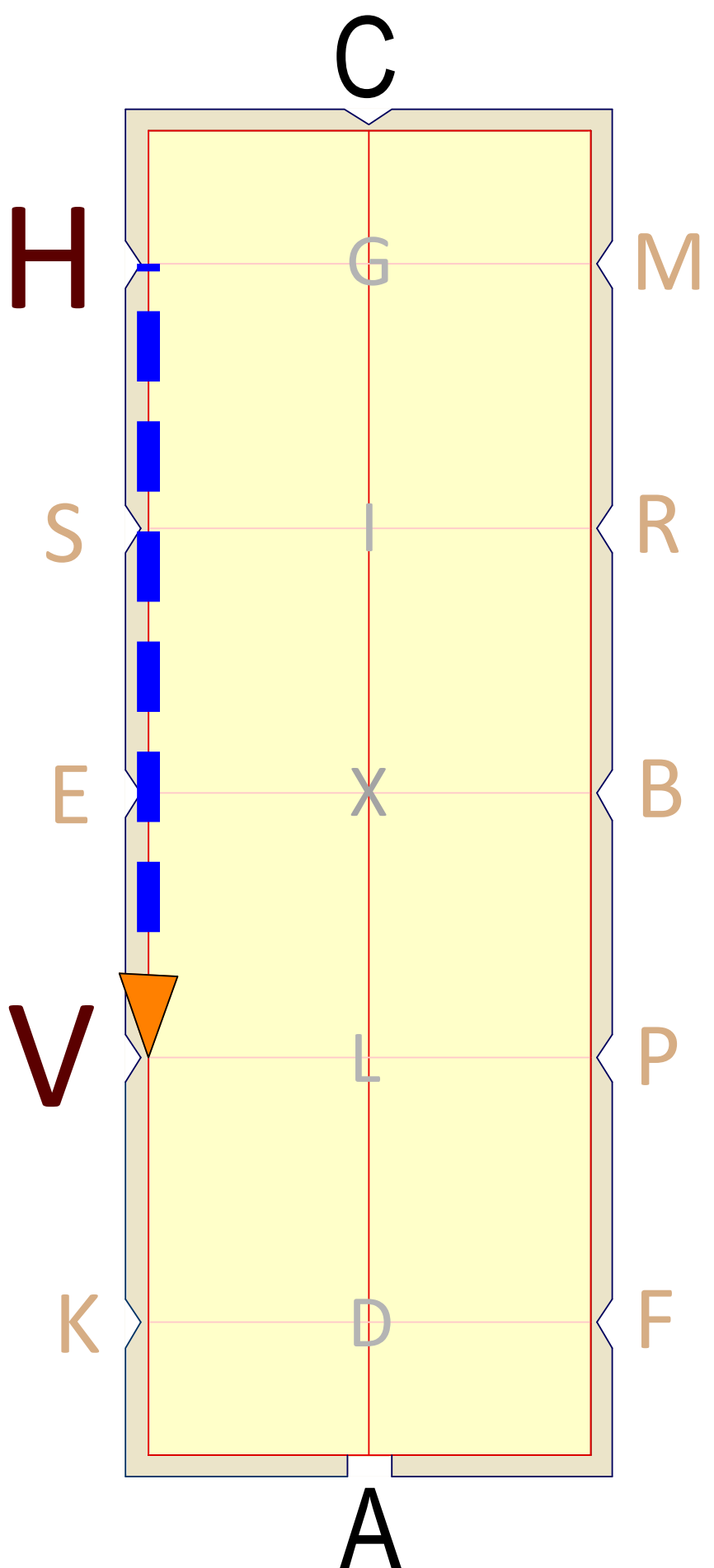
C
Working
canter
left lead

CH
Working
canter



9

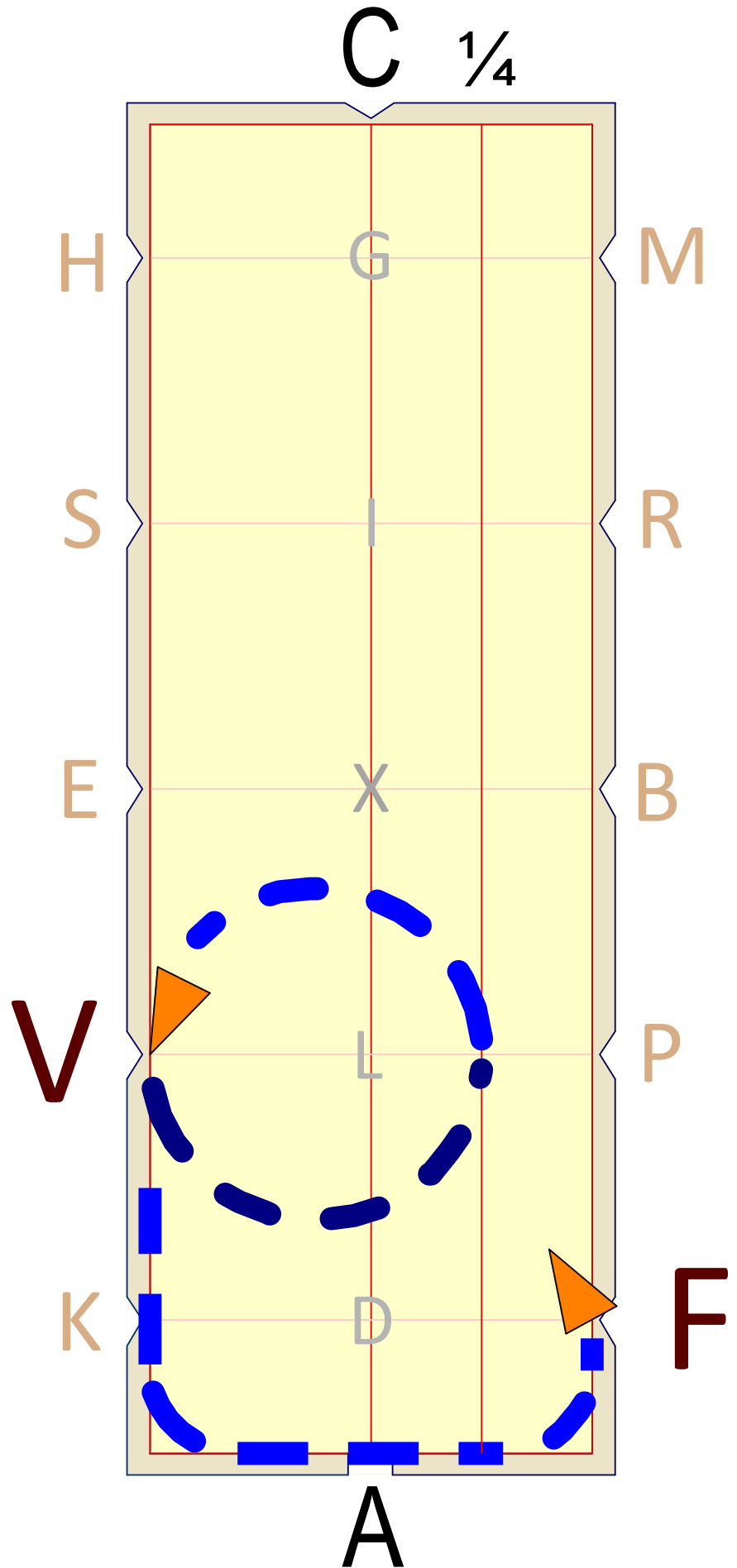
HV
Lengthen
stride
in canter



10

V
Circle
left 15m
Develop
working
canter in
first half
of circle

VF
Working
canter



11

FXH

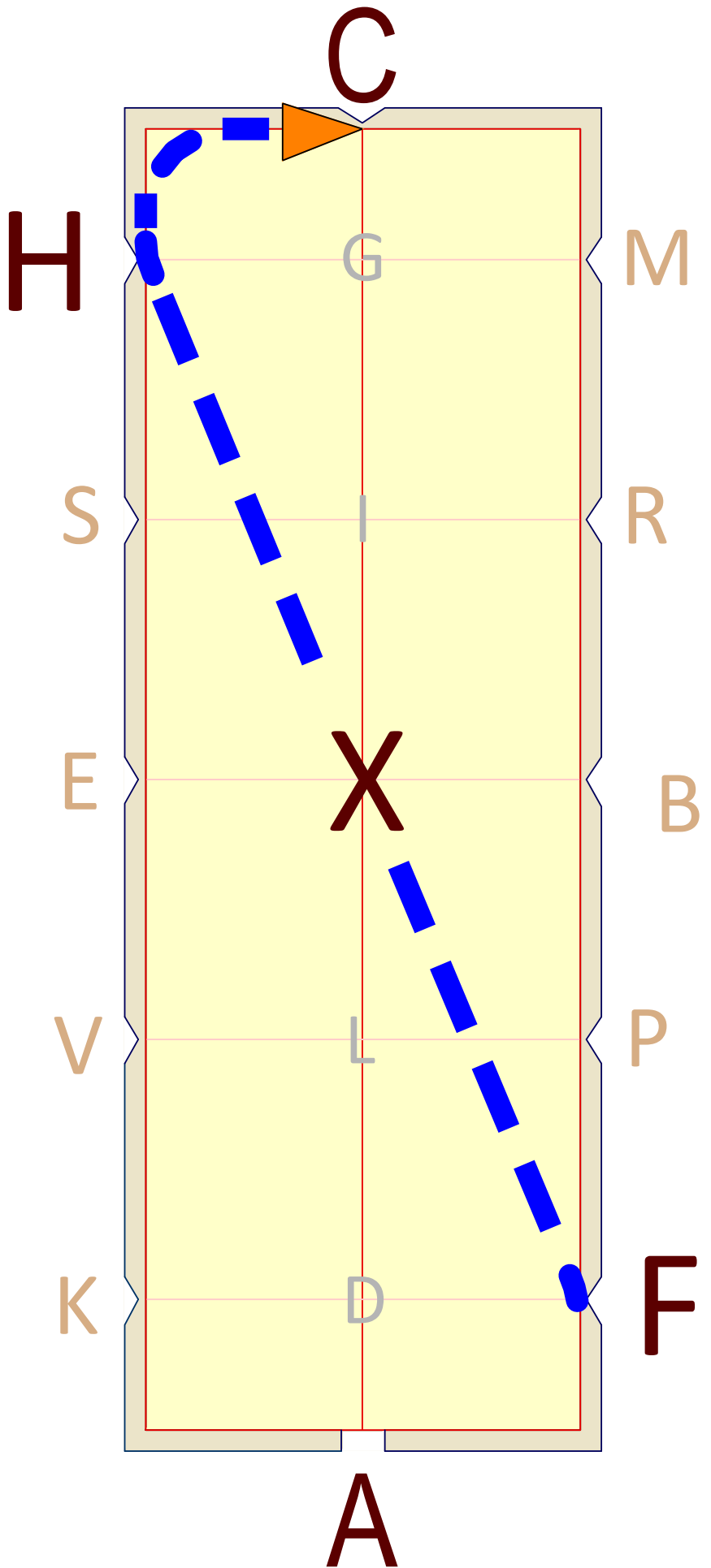
Change
rein

X

Working
trot

HC

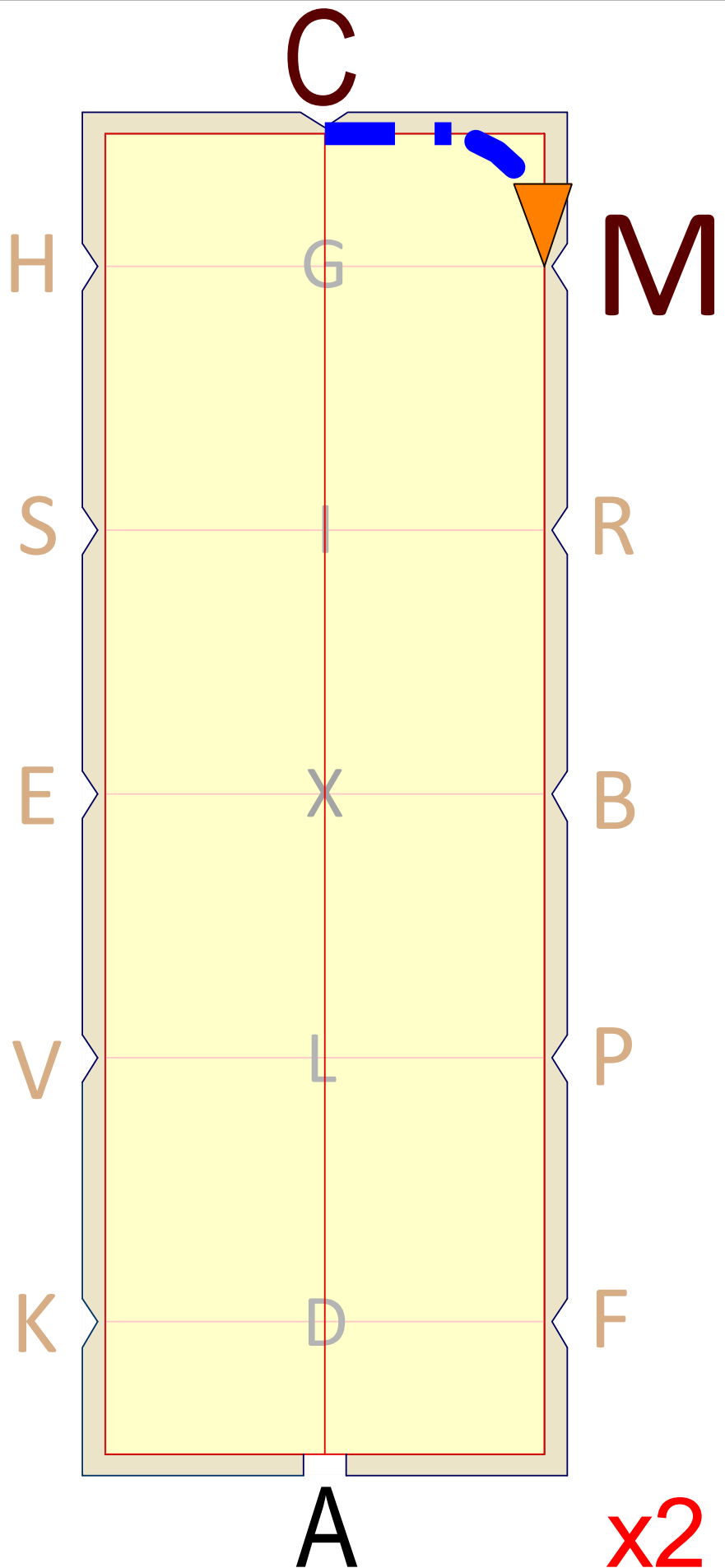
Working
trot



12

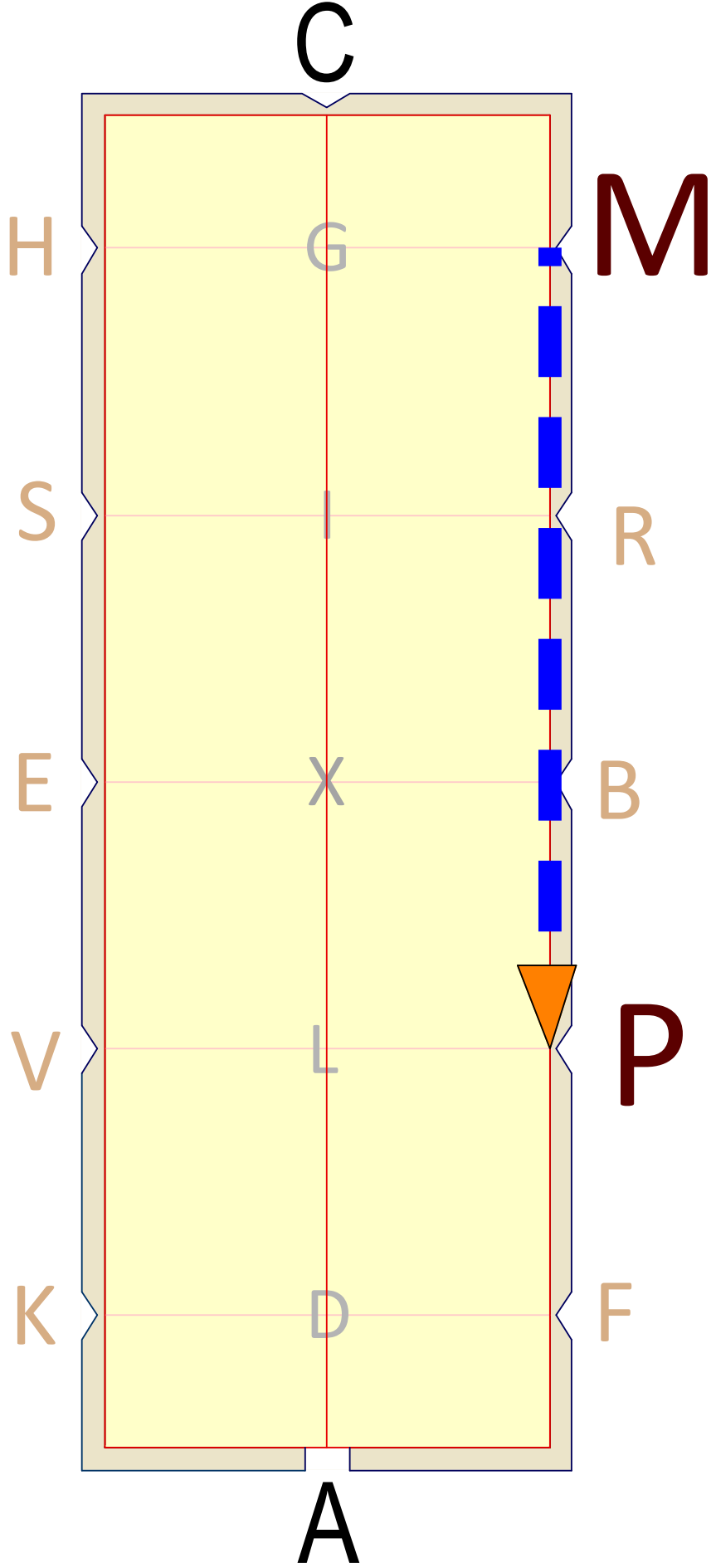
C
Working
canter
right
lead

CM
Working
canter



13

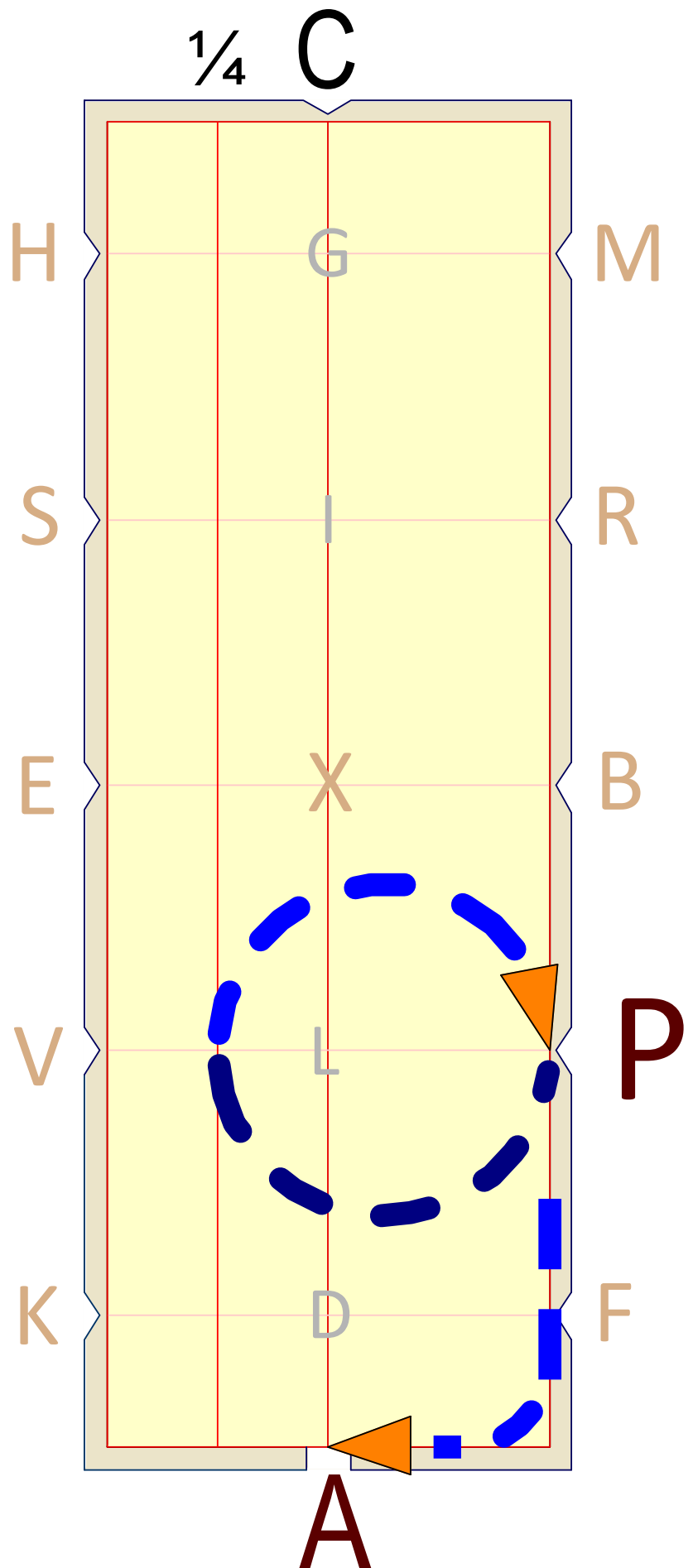
MP
Lengthen
stride in
canter



14

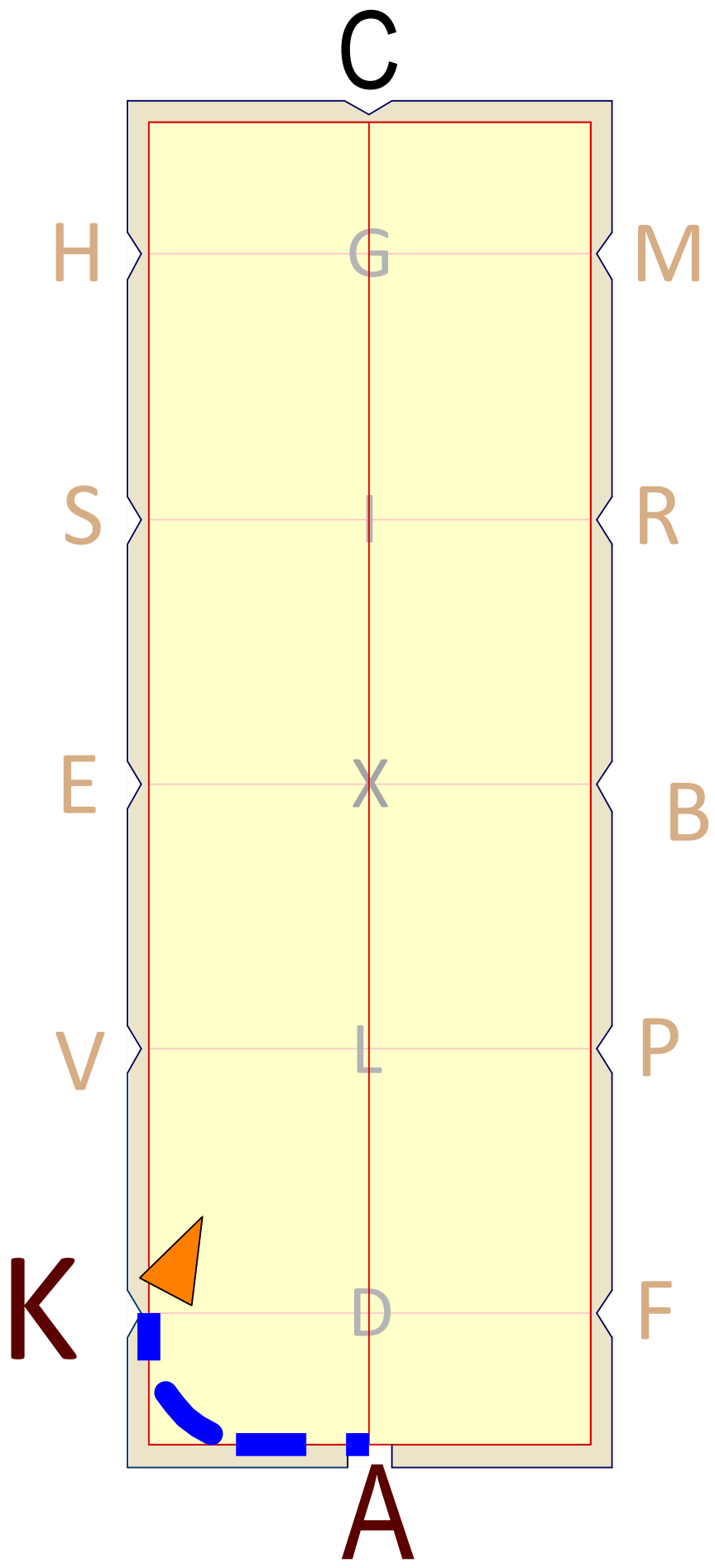
P
Circle
right 15m
Develop
working
canter in
first half
of circle

PA
Working
canter



15

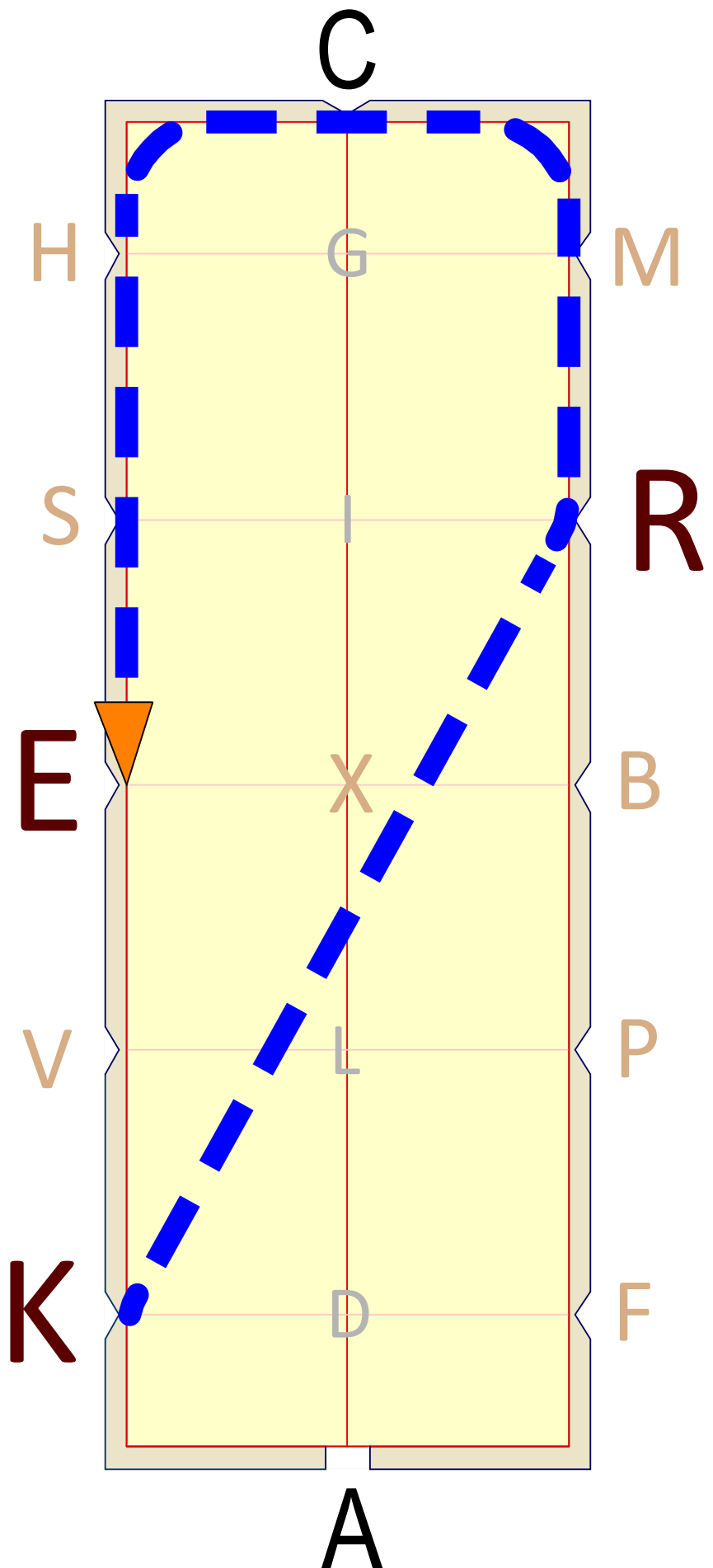
AK
Working
trot



16

KR
Change
rein,
lengthen
stride
in trot

RE
Working
trot



17

E

Half circle
left 10m

X

Down
Centreline

G

Halt, salute

*Leave arena
in walk on a
long rein at A*

